

Bid Title: 2026 Sealcoat Project

Category: Roads-Sealcoat

Status: Open

Description:

The City of Oelwein will receive sealed proposals for the 2026 sealcoat project within the city limits of Oelwein. Project will have a completion due date of June 15, 2026

The sealcoat project consists of various roads within the city.

See attached documents for additional information.

Publication Date/Time:

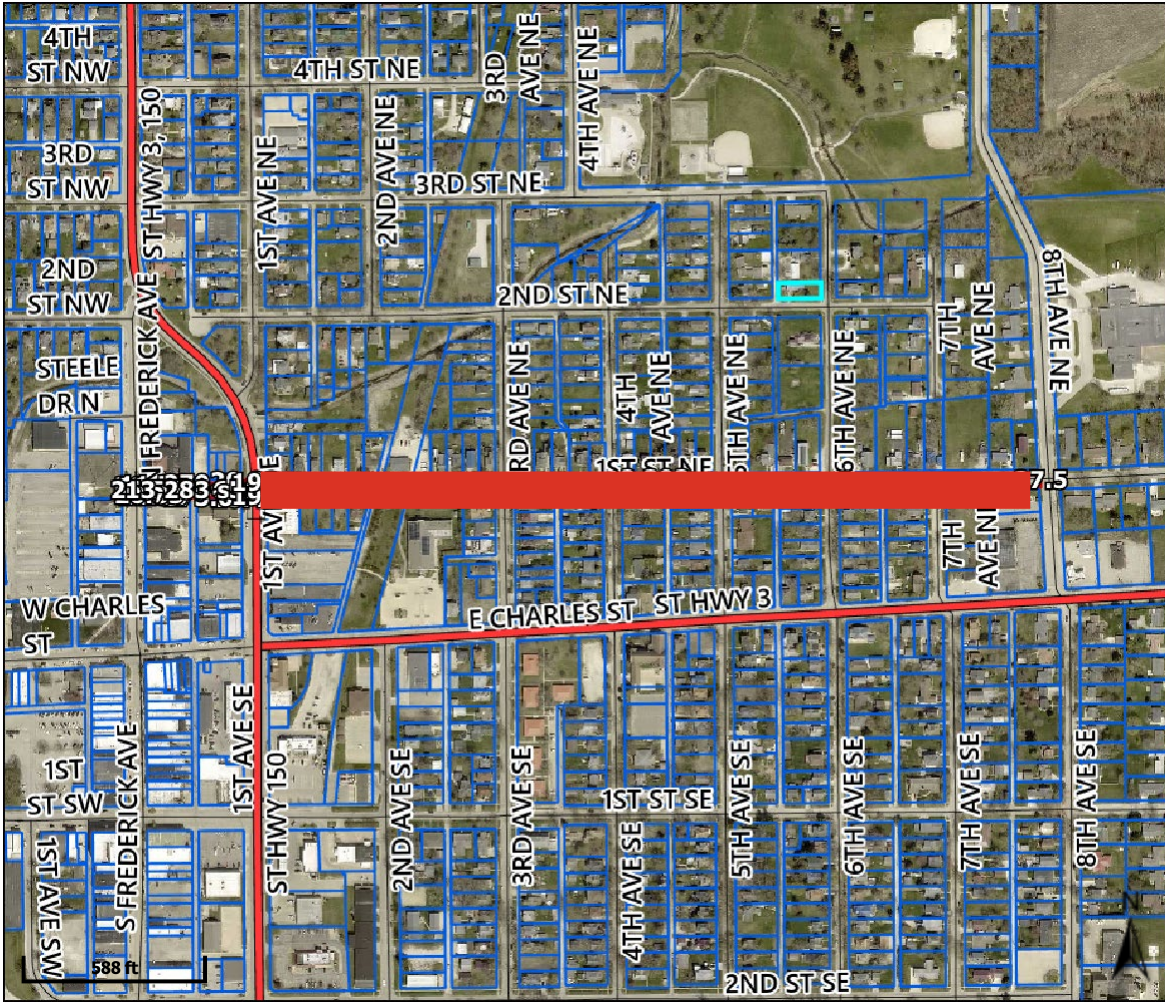
4/1/2026 8:00 AM

Closing Date/Time

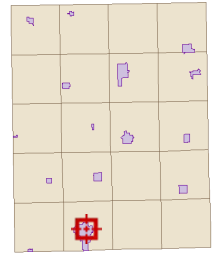
4/22/2026 4:00 PM

Contact Person:

Tommy Stewart
Assistant Public Works Director
City of Oelwein
319-283-1197
pwassistdirector@cityfoelwein.org



Overview



Legend

- Corporate Limits
- Parcels
- Major Highways**
- Federal Highway
- State Highway
- County Highway
- Roads

Parcel ID	1821277011	Alternate ID	n/a	Owner Address	Wumkes, Rick E.
Sec/Twp/Rng	21-91-9	Class	R		201 1st Street NE
Property Address	515 2ND ST. NE	Acreeage	n/a		Oelwein, IA 50662-
	OELWEIN				

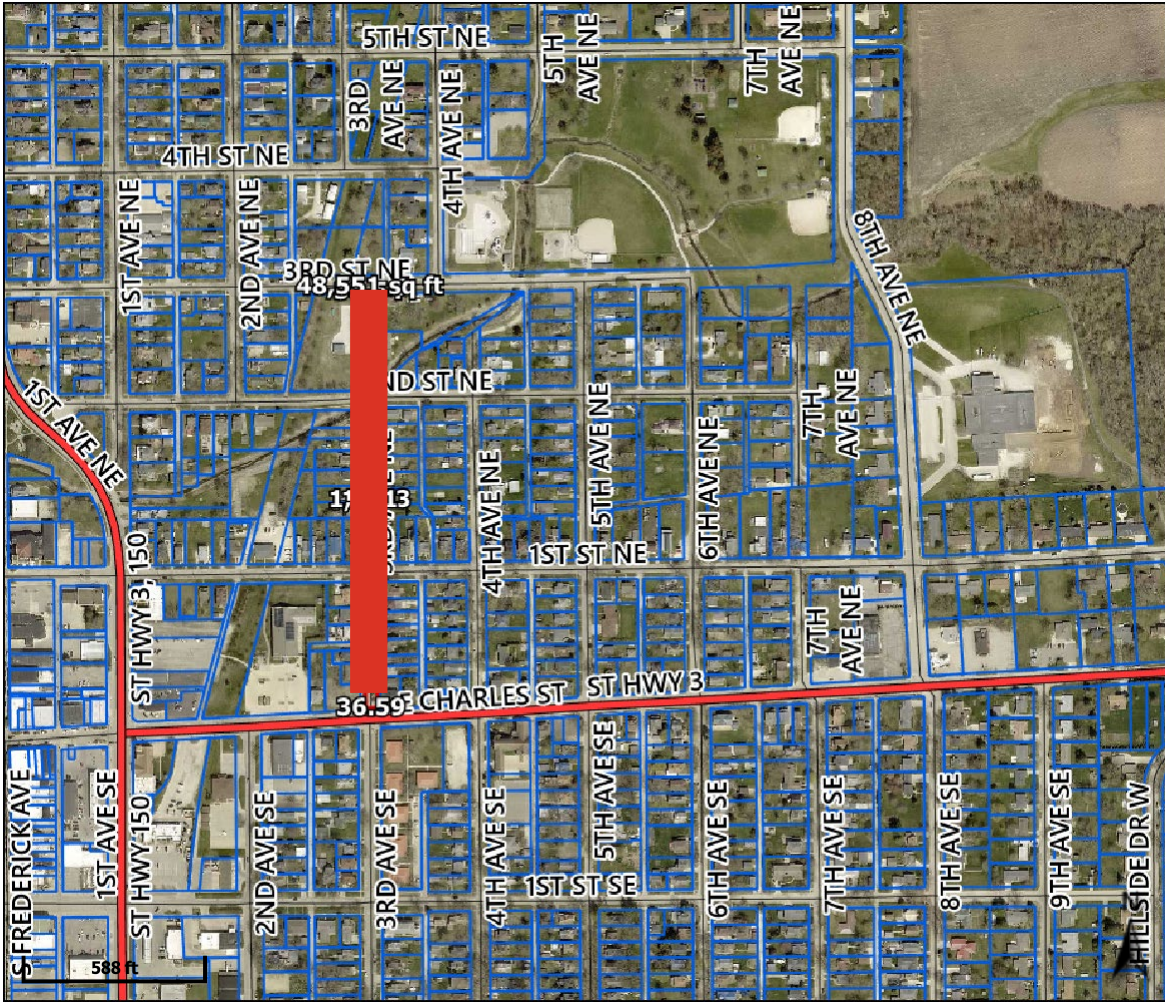
District OELWEIN OELWEIN INC
Brief Tax Description LOT 6 BLK 5
 KINT & BOYACK ADD
 (Note: Not to be used on legal documents)

Disclaimer: Fayette County, the Fayette County Assessor and their employees make every effort to produce and publish the most current and accurate information possible. The maps included in this website do not represent a survey and are compiled from official records, including plats, surveys, recorded deeds, and contracts, and only contain information required for government purposes. See the recorded documents for more detailed legal information. Data is provided in "as is" condition. No warranties, expressed or implied, are provided for the data herein, its use or its interpretation. Fayette County and its employees assume no responsibility for the consequences of inappropriate uses or interpretations of the data. Any person that relies on any information obtained from this site does so at his or her own risk. All critical information should be independently verified. If you have questions about this site please contact the Assessor's Office at (563) 422-3397.

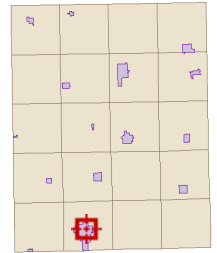
Date created: 1/16/2025
 Last Data Uploaded: 1/16/2025 3:33:58 AM

Developed by **SCHNEIDER**
 GEOSPATIAL

1st St NE from South Frederick to 8th Ave NE
 Approximately 10560 sq yds



Overview



Legend

- Corporate Limits
- Parcels
- Major Highways**
- Federal Highway
- State Highway
- County Highway
- Roads

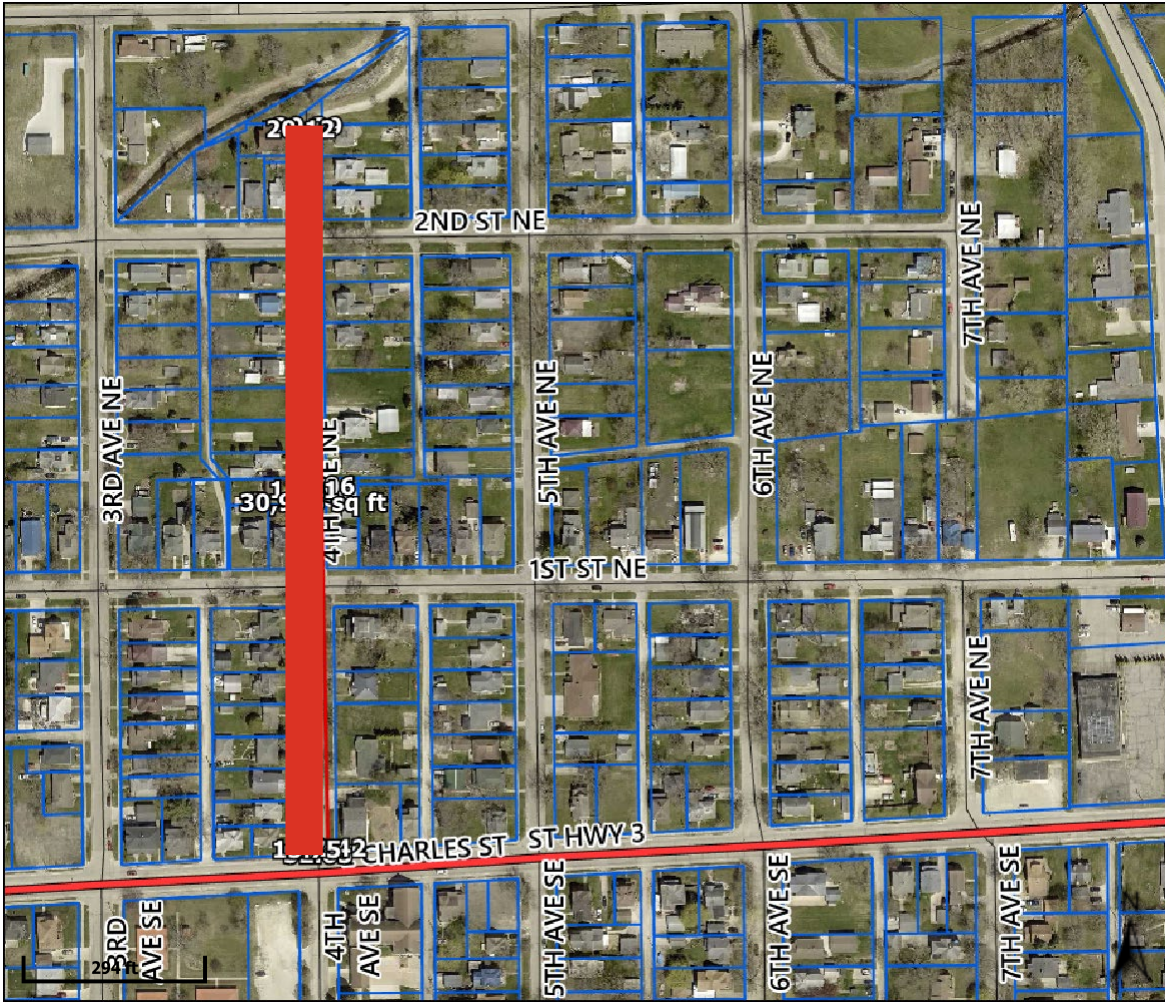
Parcel ID	1821478009	Alternate ID	n/a	Owner Address	Kepler, Timothy R.
Sec/Twp/Rng	21-91-9	Class	R		220 6th Ave SE
Property Address	220 6TH AVE. SE	Acres	n/a		Oelwein, IA 50662
	OELWEIN				
District	OELWEIN OELWEIN INC				
Brief Tax Description	LOT 11 BLK 7				
	GRANDVIEW ADD				
	<i>(Note: Not to be used on legal documents)</i>				

Disclaimer: Fayette County, the Fayette County Assessor and their employees make every effort to produce and publish the most current and accurate information possible. The maps included in this website do not represent a survey and are compiled from official records, including plats, surveys, recorded deeds, and contracts, and only contain information required for government purposes. See the recorded documents for more detailed legal information. Data is provided in "as is" condition. No warranties, expressed or implied, are provided for the data herein, its use or its interpretation. Fayette County and its employees assume no responsibility for the consequences of inappropriate uses or interpretations of the data. Any person that relies on any information obtained from this site does so at his or her own risk. All critical information should be independently verified. If you have questions about this site please contact the Assessor's Office at (563) 422-3397.

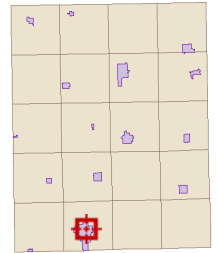
Date created: 1/16/2025
 Last Data Uploaded: 1/16/2025 3:33:58 AM

Developed by **SCHNEIDER**
 GEOSPATIAL

**3rd Ave NE from Charles to 3rd St
 Approximately 5395 yards**



Overview



Legend

-  Corporate Limits
-  Parcels
- Major Highways**
-  Federal Highway
-  State Highway
-  County Highway
-  Roads

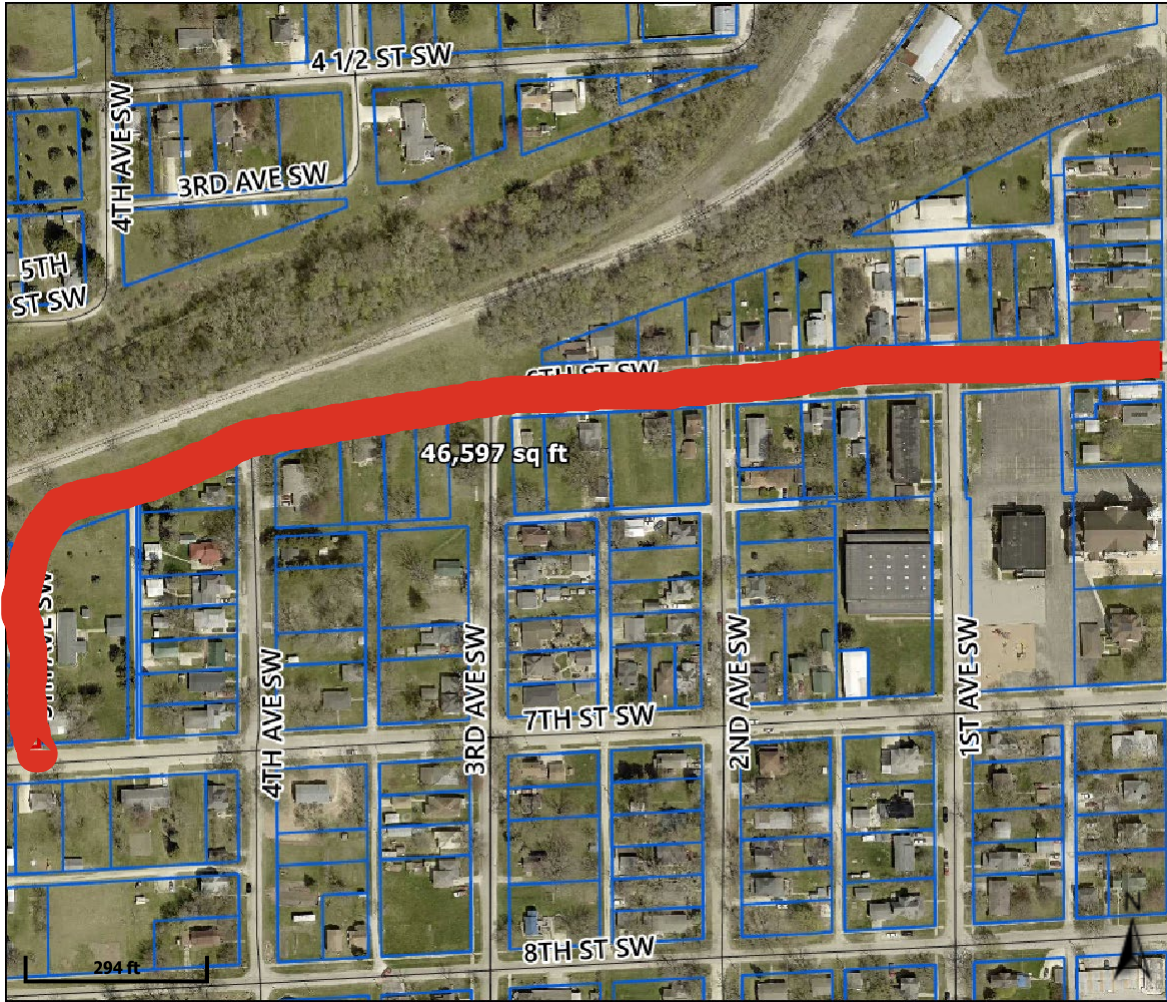
Parcel ID	1821478009	Alternate ID	n/a	Owner Address	Kepler, Timothy R.
Sec/Twp/Rng	21-91-9	Class	R		220 6th Ave SE
Property Address	220 6TH AVE. SE	Acreage	n/a		Oelwein, IA 50662
	OELWEIN				
District	OELWEIN OELWEIN INC				
Brief Tax Description	LOT 11 BLK 7				
	GRANDVIEW ADD				
	<i>(Note: Not to be used on legal documents)</i>				

Disclaimer: Fayette County, the Fayette County Assessor and their employees make every effort to produce and publish the most current and accurate information possible. The maps included in this website do not represent a survey and are compiled from official records, including plats, surveys, recorded deeds, and contracts, and only contain information required for government purposes. See the recorded documents for more detailed legal information. Data is provided in "as is" condition. No warranties, expressed or implied, are provided for the data herein, its use or its interpretation. Fayette County and its employees assume no responsibility for the consequences of inappropriate uses or interpretations of the data. Any person that relies on any information obtained from this site does so at his or her own risk. All critical information should be independently verified. If you have questions about this site please contact the Assessor's Office at (563) 422-3397.

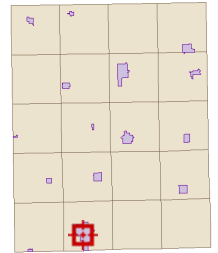
Date created: 1/16/2025
 Last Data Uploaded: 1/16/2025 3:33:58 AM

Developed by  **SCHNEIDER**
 GEOSPATIAL

4th Ave NE from Charles to Dead End
 Approximately 3445 sq yds



Overview



Legend

-  Corporate Limits
-  Parcels
- Major Highways**
-  Federal Highway
-  State Highway
-  County Highway
-  Roads

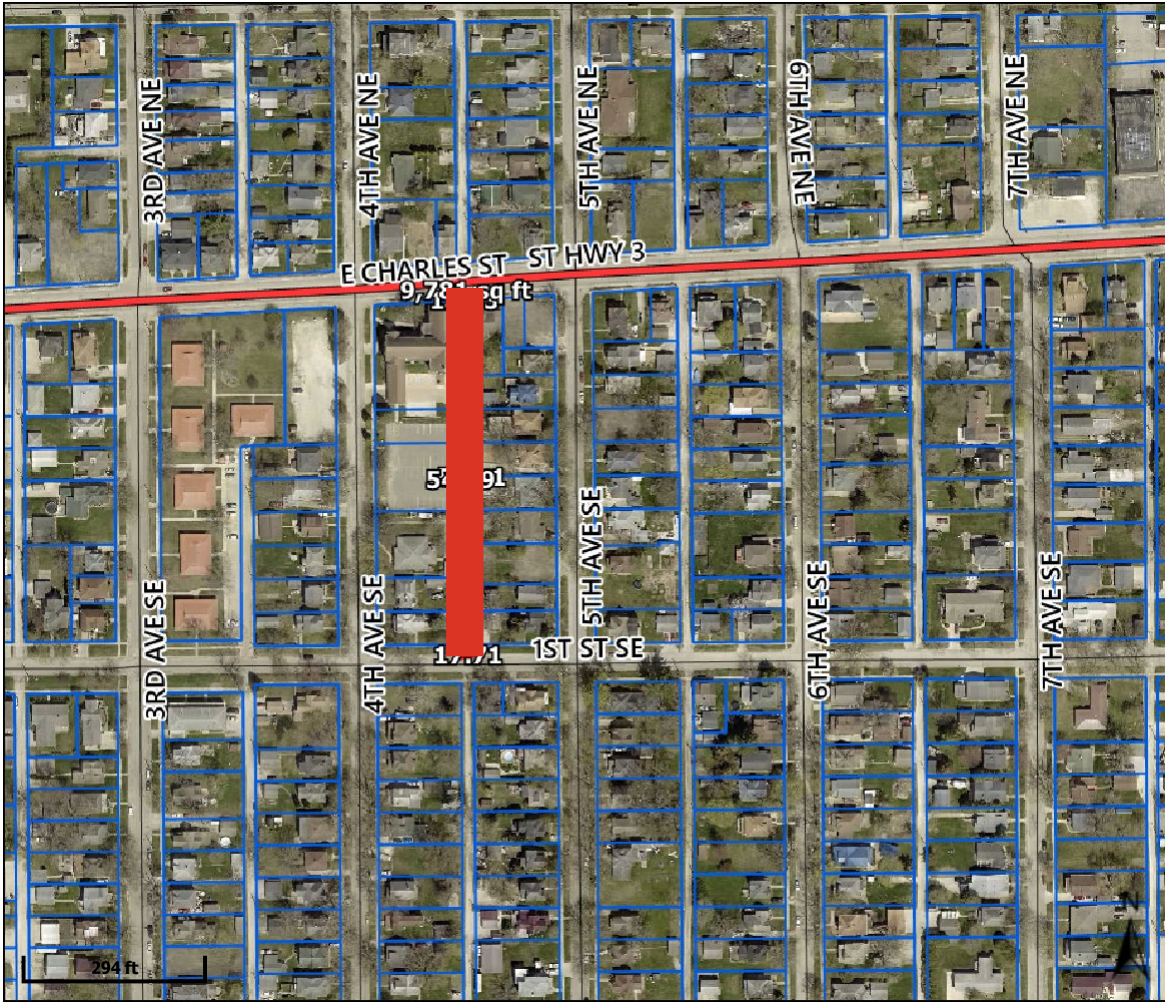
Parcel ID	1821277011	Alternate ID	n/a	Owner Address	Wumkes, Rick E.
Sec/Twp/Rng	21-91-9	Class	R		201 1st Street NE
Property Address	515 2ND ST. NE	Acreeage	n/a		Oelwein, IA 50662-
	OELWEIN				
District	OELWEIN OELWEIN INC				
Brief Tax Description	LOT 6 BLK 5				
	KINT & BOYACK ADD				
	<i>(Note: Not to be used on legal documents)</i>				

Disclaimer: Fayette County, the Fayette County Assessor and their employees make every effort to produce and publish the most current and accurate information possible. The maps included in this website do not represent a survey and are compiled from official records, including plats, surveys, recorded deeds, and contracts, and only contain information required for government purposes. See the recorded documents for more detailed legal information. Data is provided in "as is" condition. No warranties, expressed or implied, are provided for the data herein, its use or its interpretation. Fayette County and its employees assume no responsibility for the consequences of inappropriate uses or interpretations of the data. Any person that relies on any information obtained from this site does so at his or her own risk. All critical information should be independently verified. If you have questions about this site please contact the Assessor's Office at (563) 422-3397.

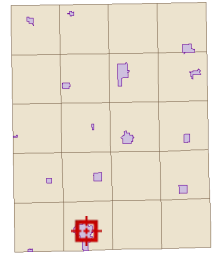
Date created: 1/16/2025
 Last Data Uploaded: 1/16/2025 3:33:58 AM

Developed by  **SCHNEIDER**
 GEOSPATIAL

6th St Sw
Approximately 5177 sq yds



Overview



Legend

-  Corporate Limits
-  Parcels
- Major Highways**
-  Federal Highway
-  State Highway
-  County Highway
-  Roads

Parcel ID	1821277011	Alternate ID	n/a	Owner Address	Wumkes, Rick E.
Sec/Twp/Rng	21-91-9	Class	R		201 1st Street NE
Property Address	515 2ND ST. NE	Acreege	n/a		Oelwein, IA 50662-
	OELWEIN				

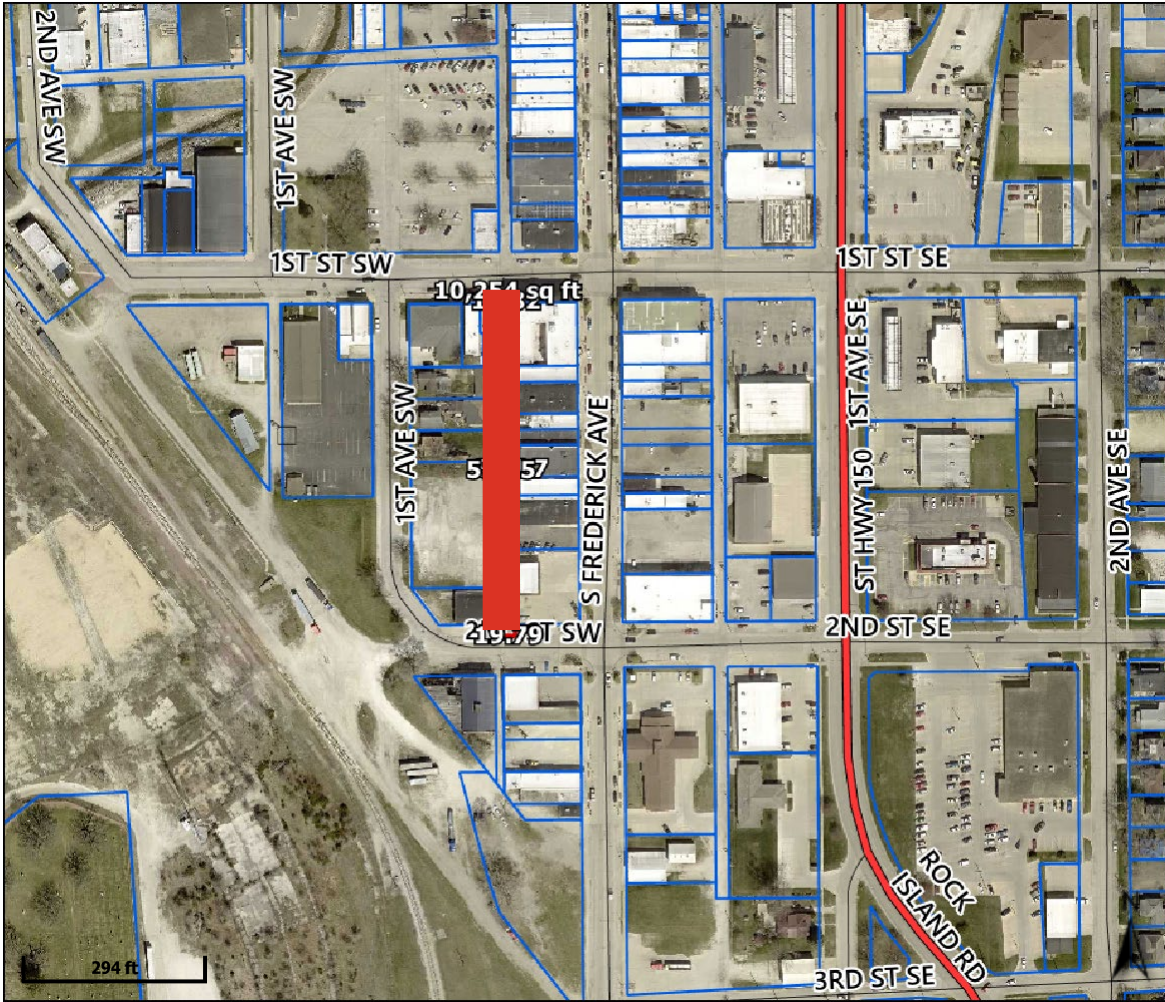
District OELWEIN OELWEIN INC
Brief Tax Description LOT 6 BLK 5
 KINT & BOYACK ADD
 (Note: Not to be used on legal documents)

Disclaimer: Fayette County, the Fayette County Assessor and their employees make every effort to produce and publish the most current and accurate information possible. The maps included in this website do not represent a survey and are compiled from official records, including plats, surveys, recorded deeds, and contracts, and only contain information required for government purposes. See the recorded documents for more detailed legal information. Data is provided in "as is" condition. No warranties, expressed or implied, are provided for the data herein, its use or its interpretation. Fayette County and its employees assume no responsibility for the consequences of inappropriate uses or interpretations of the data. Any person that relies on any information obtained from this site does so at his or her own risk. All critical information should be independently verified. If you have questions about this site please contact the Assessor's Office at (563) 422-3397.

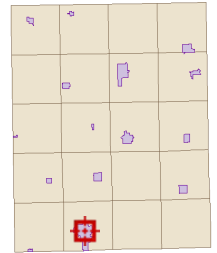
Date created: 1/16/2025
 Last Data Uploaded: 1/16/2025 3:33:58 AM

Developed by  **SCHNEIDER**
 GEOSPATIAL

Alley in 400 block East Charles near Lutheran Church
 Approximately 1087 sq yds



Overview



Legend

- Corporate Limits
- Parcels
- Major Highways**
- Federal Highway
- State Highway
- County Highway
- Roads

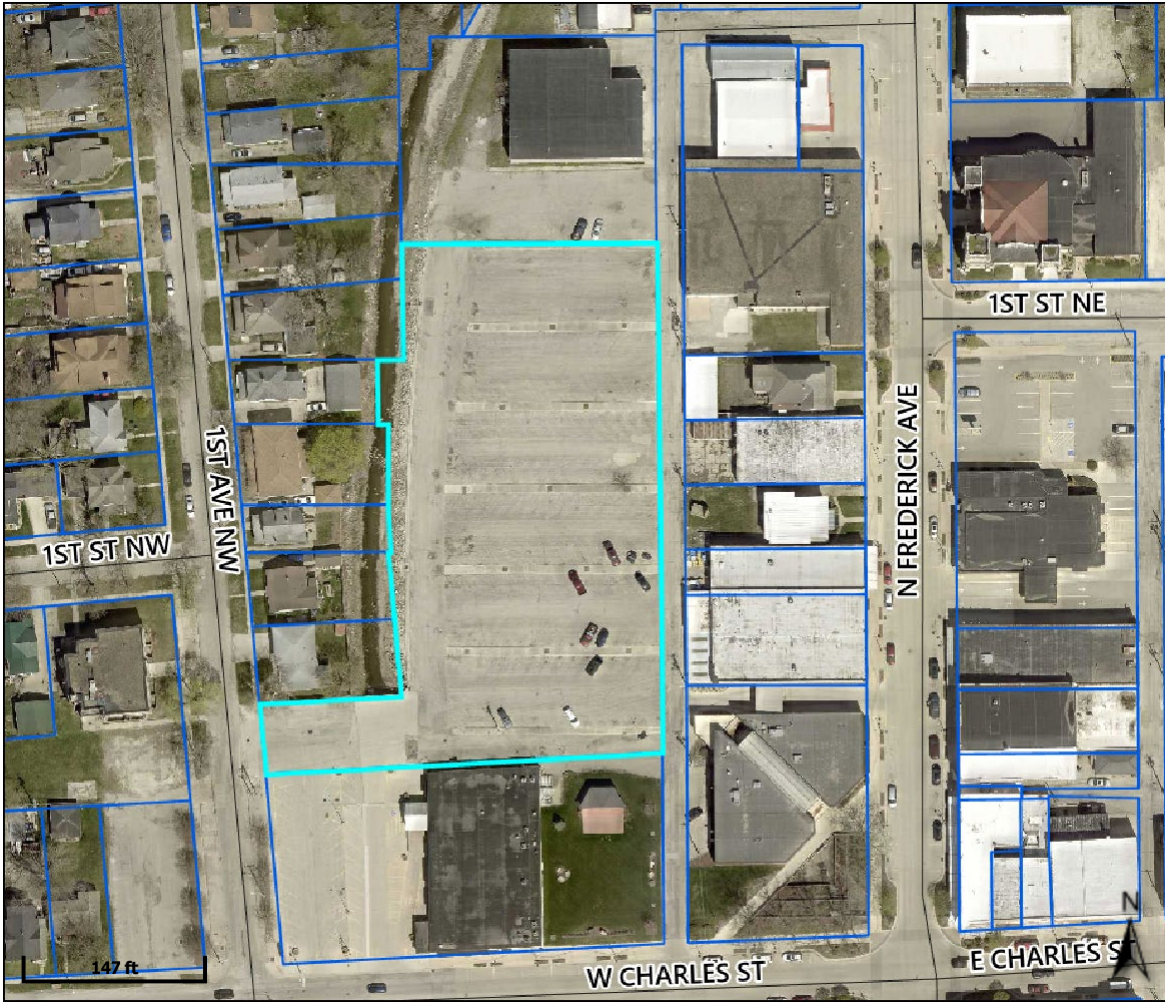
Parcel ID	1821427013	Alternate ID	n/a	Owner Address	Bush, Marc D. &
Sec/Twp/Rng	21-91-9	Class	R		Husted, Debra S.
Property Address	24 5TH AVE. SE	Acreege	n/a		24 5th Ave SE
	OELWEIN				Oelwein, IA 50662
District	OELWEIN OELWEIN INC				
Brief Tax Description	LOT 26 BLK 2				
	OELWEIN 4TH ADD				
	(Note: Not to be used on legal documents)				

Disclaimer: Fayette County, the Fayette County Assessor and their employees make every effort to produce and publish the most current and accurate information possible. The maps included in this website do not represent a survey and are compiled from official records, including plats, surveys, recorded deeds, and contracts, and only contain information required for government purposes. See the recorded documents for more detailed legal information. Data is provided in "as is" condition. No warranties, expressed or implied, are provided for the data herein, its use or its interpretation. Fayette County and its employees assume no responsibility for the consequences of inappropriate uses or interpretations of the data. Any person that relies on any information obtained from this site does so at his or her own risk. All critical information should be independently verified. If you have questions about this site please contact the Assessor's Office at (563) 422-3397.

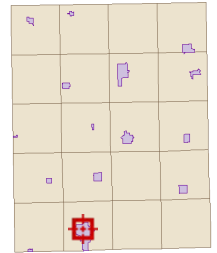
Date created: 1/16/2025
 Last Data Uploaded: 1/16/2025 3:33:58 AM

Developed by **SCHNEIDER**
GEOSPATIAL

**West alley in the 200 Block of South Frederick
 Approximately 1140 sq yds**



Overview



Legend

-  Corporate Limits
-  Parcels
- Major Highways**
-  Federal Highway
-  State Highway
-  County Highway
-  Roads

Parcel ID	1821181019	Alternate ID	n/a	Owner Address	Oelwein, City Of
Sec/Twp/Rng	21-91-9	Class	C		City Hall 20 2nd Ave. SW
Property Address		Acreage	2.5		Oelwein, IA 50662-
District	OELWEIN OELWEIN CENTRAL UR				
Brief Tax Description	COM 500'W & 160'N OF SE COR SE NW SEC 21 TH E 317'N 458'W 198.4'S 90'W 29.8'S 50'E 7.8'S 100'W 2' S 116.9'W 112'S 75' TO BEG (PARKING LOT)				
	<i>(Note: Not to be used on legal documents)</i>				

Disclaimer: Fayette County, the Fayette County Assessor and their employees make every effort to produce and publish the most current and accurate information possible. The maps included in this website do not represent a survey and are compiled from official records, including plats, surveys, recorded deeds, and contracts, and only contain information required for government purposes. See the recorded documents for more detailed legal information. Data is provided in "as is" condition. No warranties, expressed or implied, are provided for the data herein, its use or its interpretation. Fayette County and its employees assume no responsibility for the consequences of inappropriate uses or interpretations of the data. Any person that relies on any information obtained from this site does so at his or her own risk. All critical information should be independently verified. If you have questions about this site please contact the Assessor's Office at (563) 422-3397.

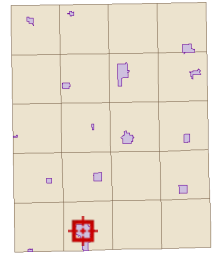
Date created: 1/16/2025
Last Data Uploaded: 1/16/2025 3:33:58 AM

Developed by  **SCHNEIDER**
GEOSPATIAL

Otter Creek Line parking lot
Approximately 7742 sq yds.



Overview



Legend

-  Corporate Limits
-  Parcels
- Major Highways**
-  Federal Highway
-  State Highway
-  County Highway
-  Roads

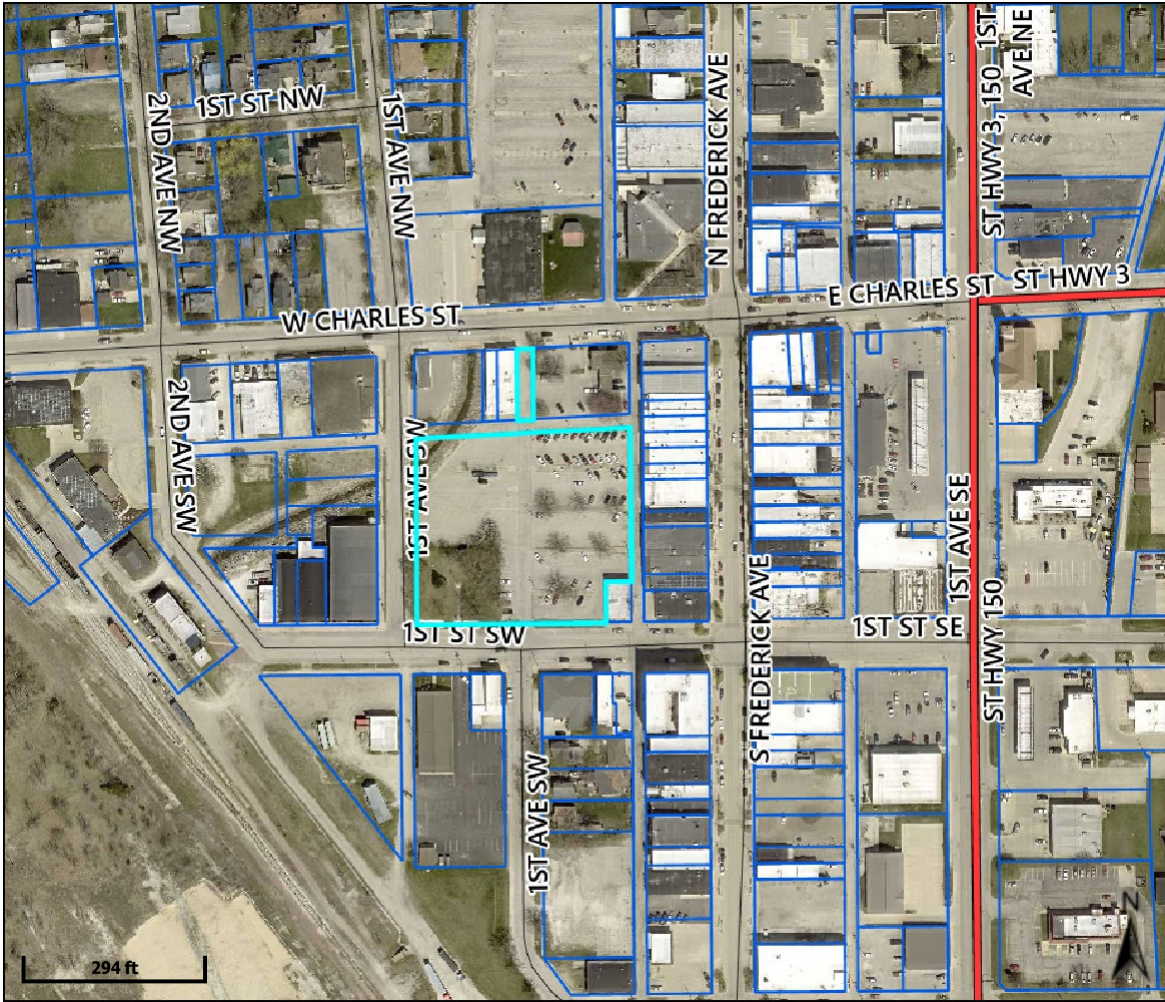
Parcel ID	1821330007	Alternate ID	n/a	Owner Address	Oelwein, City Of
Sec/Twp/Rng	21-91-9	Class	C		City Hall 20 2nd Ave. SW
Property Address	121 1ST AVE. SW	Acreage	n/a		Oelwein, IA 50662-
	OELWEIN				
District	OELWEIN OELWEIN CENTRAL UR				
Brief Tax Description	LOTS 6,7,8,9 BLK 1				
	OELWEIN 2ND. ADD				
	<i>(Note: Not to be used on legal documents)</i>				

Disclaimer: Fayette County, the Fayette County Assessor and their employees make every effort to produce and publish the most current and accurate information possible. The maps included in this website do not represent a survey and are compiled from official records, including plats, surveys, recorded deeds, and contracts, and only contain information required for government purposes. See the recorded documents for more detailed legal information. Data is provided in "as is" condition. No warranties, expressed or implied, are provided for the data herein, its use or its interpretation. Fayette County and its employees assume no responsibility for the consequences of inappropriate uses or interpretations of the data. Any person that relies on any information obtained from this site does so at his or her own risk. All critical information should be independently verified. If you have questions about this site please contact the Assessor's Office at (563) 422-3397.

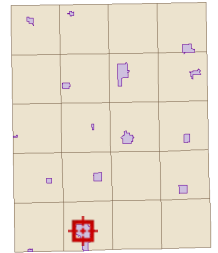
Date created: 1/16/2025
 Last Data Uploaded: 1/16/2025 3:33:58 AM

Developed by  **SCHNEIDER**
 GEOSPATIAL

Bent Iron Rail parking lot
 Approximately 2460 sq yds.



Overview



Legend

-  Corporate Limits
-  Parcels
- Major Highways**
-  Federal Highway
-  State Highway
-  County Highway
-  Roads

Parcel ID	1821328006	Alternate ID	n/a	Owner Address	Oelwein, City Of
Sec/Twp/Rng	21-91-9	Class	C		City Hall 20 2nd Ave. SW
Property Address	19 1ST ST. SW	Acreege	2.09		Oelwein, IA 50662-
	OELWEIN				

District OELWEIN OELWEIN CENTRAL UR
Brief Tax Description BLK 1 EX 40' X 60'
 IN SE COR
 HOMESTEAD ADD.
 (PARKING LOT)
 (Note: Not to be used on legal documents)

Disclaimer: Fayette County, the Fayette County Assessor and their employees make every effort to produce and publish the most current and accurate information possible. The maps included in this website do not represent a survey and are compiled from official records, including plats, surveys, recorded deeds, and contracts, and only contain information required for government purposes. See the recorded documents for more detailed legal information. Data is provided in "as is" condition. No warranties, expressed or implied, are provided for the data herein, its use or its interpretation. Fayette County and its employees assume no responsibility for the consequences of inappropriate uses or interpretations of the data. Any person that relies on any information obtained from this site does so at his or her own risk. All critical information should be independently verified. If you have questions about this site please contact the Assessor's Office at (563) 422-3397.

Date created: 1/16/2025
 Last Data Uploaded: 1/16/2025 3:33:58 AM

Developed by  **SCHNEIDER**
 GEOSPATIAL

Main Line Hub parking lot
 Approximately 8745 sq yds

Scratch Level and seal coat

N. Lot

* 7,742 sq yds=430-ton HMA @ \$130/ton=\$55,914

*Double seal coat @ \$4.85/sq yd=\$37,550

* Total=\$93,464

S. Lot

*8,745 sq yds=486-ton HMA @ \$130/ton=\$63,158

*Double seal coat @ \$4.85/sq yd=\$41,976

*Total=\$105,134

Sale barn

*2,460 sq yds=137-ton HMA @ \$130/ton=\$17,810

*Double seal coat @ \$4.85/sq yd=\$11,931

*Total=\$29,741

Clete Alley

1,140 sq yds=64-ton HMA @ \$130/ton=\$8,320

*Double seal coat @ \$4.85/sq yd=\$5,529

*Total=\$13,849

West Charles Alley

*1,087 sq yds=60-ton HMA @ \$130/ton=\$7,800

*Double seal coat @ \$4.85/sq yd=\$5,272

*Total=\$13,072

1st St NE

*10,560 sq yds=587-ton HMA @\$130/ton=\$76,310

*Double seal coat @ \$4.85/sq yd=\$51,216

*Total=\$127,526

6th St SW

*5,177 sq yds=288-ton HMA @ \$130/ton=\$37,440

*Double seal coat @ \$4.85/sq yd=\$25,108

*Total=\$62,548

3rd Ave NE

*5,395 sq yds=300-ton HMA @ \$130/ton=\$39,000

*Double seal coat @ \$4.85/sq yd=\$26,166

*Total=\$65,166

4th Ave NE

*3,445 sq yds=191-ton HMA @ \$130/ton=\$24,830

*Double seal coat @ \$4.85/sq yd=\$16,708

*Total=\$41,538

Grand Total=\$552,038